



**FSM Frankenberger
GmbH & Co. KG**

Equipment for Water
and Waste Water
Inlet Works



Multi Rake Bar Screen



FSM Frankenberger GmbH & Co. KG
Vor dem Hohen Stein 1 · D-35415 Pohlheim/Garbenteich
Tel. +49 (0) 06404-9194-0 · Fax +49 (0) 06404-9194-91
info@fsm-umwelt.de · www.fsm-umwelt.de

FSM Multi Rake Bar Screen



The FSM - Multi Rake Bar Screen was developed to deal with particular problems associated with sewage pre-treatment plant.

Parallel to the increasing demands of users, FSM introduced modifications to the basic design. These have resulted in an optimum product for the preliminary treatment of waste water-providing high performance coupled with low operating costs.

Functional principle:

The waste water flows through bars made of stainless steel, while contaminants are held back. Solid matter is picked up directly at the bottom of the channel without the need for a bottom recess. The cleaning elements are fixed between two chains and are designed with teeth for the best cleaning of the screen. The screenings can be discharged into containers, wash compactors, screw conveyors, conveyor belts etc. As an option we can deliver a flexible rake.

Features:

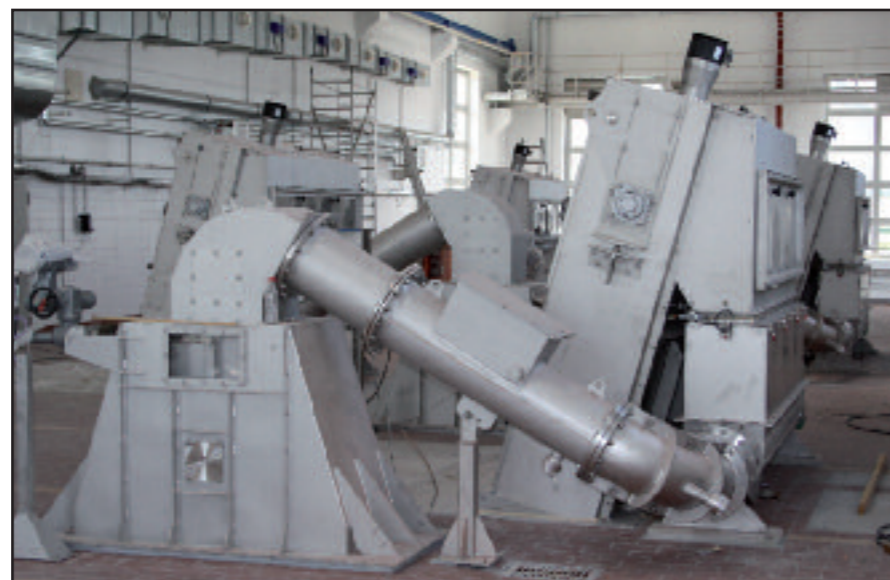
- High reliability through robust construction - no need for upstream coarse screening.
- The Multi Rake Bar Screen allows the passage of grit without malfunctioning.
- Discharge of coarse matter through large rakes
- Screen field optimally cleaned as a result of the teeth of the rakes.
- Screenings conveyed positively to the discharge point.
- Excellent cost/performance ratio



- Low maintenance costs
- Suitable for outdoor sites / operation in winter
- Easily adapted to suit changed operating conditions
- Machine completely hygienically encapsulated

Applications in municipal and industrial clarification plant

- waste water pre-treatment / fine screening
- sludge screening / secondary sludge
- sludge screening / primary sludge
- sea water treatment
- rainwater tank overflow and storage channel screening
- fecal matter reception and treatment



Applications in the paper and cellulose industry

- wash water, debarking installations
- coarse matter runoff, channel water

Applications in power stations

- cooling and service water screening (river intake etc.)
- sea water screening

Industrial applications

- cooling and waste water screening (river intake etc.)
- sea water screening
- textile and textile finishing industry - preliminary clarification of total waste water
- meat, fish and poultry processing / slaughter-houses - preliminary clarification of total waste water
- sugar industry - preliminary clarification of total waste water
- composting installations, waste product and disposal engineering, seepage water treatment
- fruit and vegetable processing - preliminary clarification of total waste water
- breweries - preliminary clarification of total waste water
- animal meal production- preliminary clarification of total waste water
- removal of algae

Dimensions:

| | |
|------------------------|---|
| filter width | 300 to 6000 mm |
| shaft center distance | up to 25000 mm, larger sizes on request |
| slot opening | 2 - 100 mm, other sizes on request |
| water level difference | up to 2000 mm possible, larger differentials on request |
| mounting angle | 90°, 75° or 60° other angles on request |

Material/makes:

| | |
|-------------------------------|---|
| machine frame | stainless steel SS304 or SS316, other materials on request |
| screen field | stainless steel SS304 or SS316, other materials on request |
| chains | bush conveyor chain of wear resistant steel or wear resistant stainless steel |
| rollers | PA, SS304 or SS316, other materials on request |
| sprockets | wear resistant steel or wear resistant stainless steel |
| drives | geared motors, make SEW |
| use with sea / brackish water | sea water resistant material for machine frame, screen field, chains, sprockets |